

IADS END USER APPLICATION TRAINING

- Instructors with 20+ years IADS experience
- Three modules: Basic, Intermediate and Advanced
- Basic module: 8 hours; no prerequisite
- Intermediate module: 8 hours; Basic required
- Advanced module: 8 hours; Basic and Intermediate required
- Advanced Structures module available for loads and flutter analysis capabilities; plotting trend data
- IADS Operator Console training module - ask for details
- Modern on-site training facility
- Classroom accommodations for up to 12 students
- 95% hands on instruction - individual workstations
- Class tailored to emphasize test areas
- Training materials included - take home
- Instructor available for one-on-one additional help
- IADS developers on-site for questions
- CONUS and OCONUS off-site instruction available

Contacts

Scheduling

Eileen Suszek

IADS Training Lead

esuszek@symvionics.com

661-277-5438 (Office)

661-400-7194 (Cell)

Pricing

Marty Guenther

IADS Product Coordinator

mguenther@symvionics.com

661-273-7003

Ext. 204

Class Availability

Please refer to the IADS Training Calendar at:

<http://iads.symvionics.com/training.html>

LOCATION

IADS Training Center

SYMVIONICS, Inc. Telemetry Systems

190 Sierra Court, Suite A2

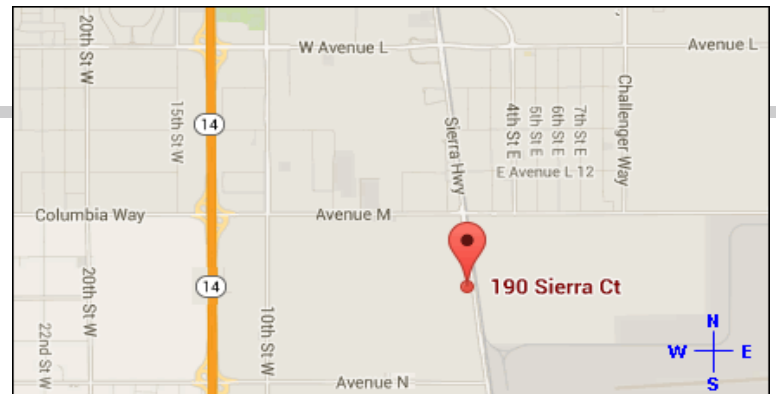
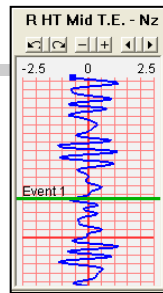
Palmdale, CA

Directions

From LA, take the 405N to 5N to 14N.

Exit east on Avenue M. Go south at the light on Sierra Hwy.

The facility is in the business center on the right, after the credit union.



SYLLABUS

Basic Module

- Introduction
- Post Test Data Server
- The Configuration File
- IADS Playback Client
- Logging On and Off
- The IADS Desktop
- The Dashboard
- The Display Builder
- The Parameter Tool
- Message Logs
- System Performance
- The Configuration Tool
- Parameter Defaults Table
- Planned Test Points
- Analysis Windows
- Security Classification
- Creating Displays
- Thresholding
- Panels & Tabbed Displays
- Filtering
- Stripcharts
- Point Selections
- Event Markers
- IADS Logs
- Customizing Displays
- Help System

Intermediate Module

- Defining Parameters
- Intro to Derived Parameters
- Frequency Plots
- Recalculating Data
- Cross Plots
- Load Limit Envelopes
- Annunciators
- Slider Display
- Alphanumeric Display
- Property Dynamics
- Alphanumeric Table
- ActiveX Displays
- Model Displays
- Audio and Video Players
- Drawing Package
- IADS 2D Moving Map
- Situational Awareness
- ICAW Display
- Function Keys
- Logging Data
- Exporting Data for
- Multiple Parameters
- The Query Builder

Advanced Module

- Client Application Settings
- Defining Test Points
- Setting Test Points
- Text Input Object
- Action Input Object
- Edit Toolbox
- Advanced Derived Equations
- Parameter Analysis Tool
- Decom Status
- Sync Lock Processing
- 2D and 3D Interpolation
- Data Editing
- Null Corrections
- Wild Point Editing
- Selective Area RMS
- Data Search Tool
- Parameter Tool Options
- Data Stitching
- Data Export Options
- Mission Attributes
- Unit Conversion
- File Search Path
- TMATS