



---

# ***Installation and Licensing User Guide***

---

May 2017

SYMVIONICS Document SSD-IADS-009

© 1996-2018 SYMVIONICS, Inc.

All rights reserved.



## Table of Contents

<b>1. Installing IADS .....</b>	<b>3</b>
1.1. Overview.....	3
1.2. Installation Requirements .....	3
1.3. Firewall and Antivirus Settings.....	3
1.4. Disk Labels.....	4
1.5. Installation Packages .....	4
1.6. The Installation Process.....	6
1.7. Software Prerequisites .....	7
<b>2. Licensing IADS.....</b>	<b>8</b>
2.1. Overview.....	8
2.2. To obtain a node-locked license key .....	8
2.3. To install a node-locked license .....	9
2.4. To install a floating license .....	10
2.5. To install a dongle license.....	12
2.6. Transferring a license key.....	13

## Table of Figures

Figure 1-1 IADS Install Wizard Custom Setup .....	6
Figure 2-1 IADS Key Manager .....	9
Figure 2-2 IADS Floating License Diagram .....	10
Figure 2-3 IADS Key Server Manager.....	11
Figure 2-4 IADS Key Manager with Floating License .....	12
Figure 2-5 Floating License Error .....	12
Figure 2-6 IADS Hardware License Missing Dialog.....	13
Figure 2-7 IADS Key Manager with Dongle .....	13

# 1. Installing IADS

## 1.1. Overview

The IADS® Installation process will perform a new install or replace an existing install. When replacing an existing install, it is recommend to upgrade at a point in time that allows opportunity to recover from any possible problems and allow for ample time to perform an end-to-end system checkout with data.

Ordinarily we provide installation packages in the form of a CD-ROM which will automatically begin the installation when the disk is inserted. However, the contents of the CD can easily be copied to a local or remote storage device prior to installation. To bypass the auto-run feature, hold down the Shift key while inserting the CD. To execute the installation manually, double-click on the InstallIADS.exe.

All packages are Windows Installer 2.0 compliant. This can provide a variety of end-user options for application management and installation. For more information, review the Microsoft support center about this service:

*<http://support.microsoft.com/search/default.aspx?query=windows%20installer>*

This functionality provides a great deal of flexibility with regard to how to deploy our software by using capabilities such as “silent” installation or even to remotely deploy packages to remote users at their desktops.

It is permissible to duplicate the installation media for appropriate use and distribution in accordance with your licensing and maintenance agreements with SYMVIONICS, Inc.

## 1.2. Installation Requirements

- 1) The required operating systems supported by IADS are the following Microsoft Operating Systems: Windows 2000 (CDS Only), Windows XP, Windows Server 2003, Windows Vista, Windows Server 2008, Windows 7 and Windows 10.
- 2) The account performing the installation must have Administrative privileges.
- 3) DirectX 9.0c or greater
- 4) Microsoft Internet Explorer 6.0 or greater.
- 5) IADS Log Viewer - Requires .NET Framework 2.0 and Microsoft Report Viewer Controls (Both applications available on the root of the IADS installation cd, Redist folder).

**Note: After upgrading to Windows 10, it is recommended to un-install and then re-install the IADS application because of changes to the Microsoft OS that affect firewall settings, etc...**

## 1.3. Firewall and Antivirus Settings

IADS attempts to configure these settings at installation time but your antivirus software or third-party firewall may need exceptions. A firewall may prevent network communications from UDP sources such as Chapter 10; and may also prevent internal IADS communications. Antivirus software can impede disk performance which can cause performance issues with IADS real time archive.

Note: A lack of administrative control can have an impact on other less used features such as certain Windows drivers.

## 1.4. Disk Labels

Each official installation CD is labeled with its respective part number which corresponds to the different packages available for purchase. Some support issues may require we know the specifics of the installation CD.

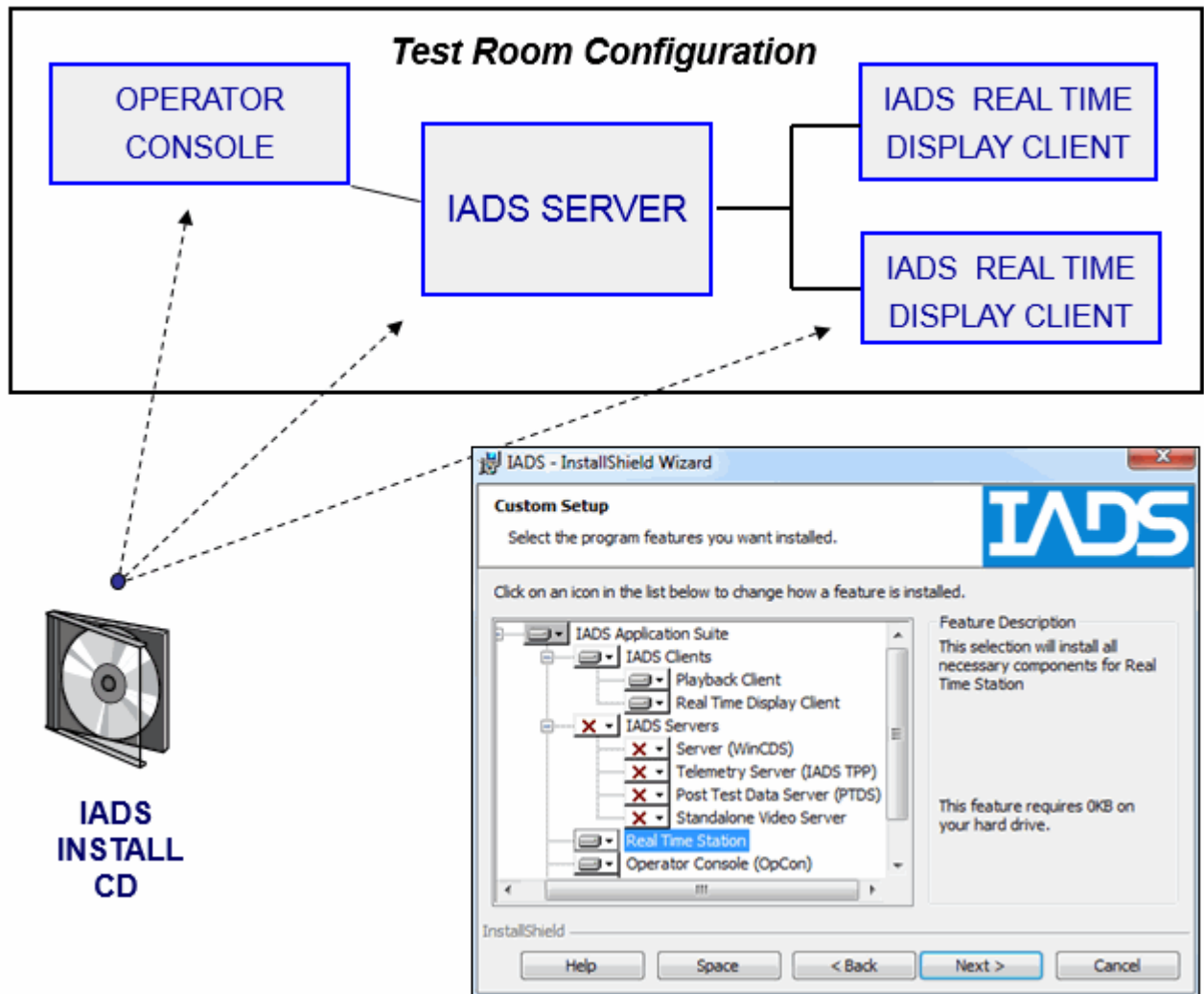
- 1) The first line of the label indicates the revision of the software, for example, 9.0
- 2) Determination of the part number of the package can be made from the second line which will read IADS-TELEM-xxx where xxx denotes the details of a particular package's capabilities, for example, IADS-TELEM-CLIENT.
- 3) The third line of the CD will indicate if the CD contains any facility specific enhancements or modifications.
- 4) Each CD also contains the acronym F.O.U.O (For Official Use Only) and the word Unclassified as requested/required by many of our customers.

## 1.5. Installation Packages

Each part number denotes a set of features and capabilities distinct from one another that fit into categories of usage by the end user. Some disks are provided to customers to fulfill a distinct commitment, but we also often provide additional media as a convenience to our customers to simplify deployment. Here is an overview of the most common packages and their capabilities:

- 1) **IADS-TELEM-CLIENT** - This package provides multiple 'flavors' of Client installation:
  - a. Playback Client - Opens the Startup dialog to select a configuration file (and a set of data files); or connects to the IADS Post Test Data Server for interaction with a dataset in a group-based client/server fashion similar to a real time environment.
  - b. Real Time Client - Connects to the IADS Real Time Server (CDS).
- 2) **IADS-TELEM-RTSTATION** - This package provides capabilities for a comprehensive single point of execution and interaction with a variety of data sources to the display software. It is most often used for onboard or planeside interaction for data validation and monitoring. It is often referred to as a 'kiosk' form of IADS but is expandable for multiple real time IADS Client connections using a CLIENT-RTS package.
- 3) **IADS-TELEM-BASE** - This package is the most comprehensive and it provides the ability to individually install nearly all of the individual features available including both the IADS Real Time and Post Test Data Servers, Display Clients, the Operator Console and Real Time Station. This package is most typically used for building up Mission Control Room type facilities.
- 4) **IADS-TELEM-BASE-TPP** – This package is essentially a merging of the BASE and RTSTATION packages. It can be used to provide Mission Control Room services for all supported data sources. It incorporates the capabilities of the IADS Real Time and Post Test Data Servers, Display Clients and the Operator Console.

Note: The IADS-TELEM-BASE and the IADS-TELEM-BASE-TPP are combination packages of multiple IADS products. These installation packages consists of a single CD that contains the software necessary to install a complete test room configuration (as shown in the diagram below), including the IADS Real Time and Post Test Data Servers, Display Clients and the Operator Console; on one or more machines.



- 5) **IADS-TELEM-PTSTATION (formerly PTSERVER)** - This package is similar to the BASE installation in that it has both Client and Server features, but in this package they are targeted towards a group-oriented Post Test environment.

**Note:** No Server software is provided with a CLIENT installation.

- 6) **IADS-TELEM-MAPS** – This two-disk installation set contains two-dimensional map files for use with the Moving Map display. Please contact SYMVIONICS for geographical areas of interest not currently on this disk. This package may be co-installed with other IADS installation packages.
- 7) **IADS-TELEM-TERRAIN** – This package contains three-dimensional terrain and texture information for use with the Situational Awareness display. Due to the vast amount of data available we recommend installing this data onto a network server for general client access (rather than installing it on individual workstations). Please contact SYMVIONICS for areas of interest which is not currently available. This package may be co-installed with other IADS installation packages. **Note:** Unless otherwise indicated above, no two packages can be installed on the same machine, for example, it is not possible to install both a PTSTATION and an RTSTATION on the same hardware.

Note: Also, all installation packages with the same name may not be 100% identical. Many installation packages contain distinct features or capabilities which are made available only to specific facilities.

## 1.6. The Installation Process

If error indications occur during the installation process, please contact Customer Support at the IADS support line 661-273-7003 x210 or via email at [iadssupport@symvionics.com](mailto:iadssupport@symvionics.com). Please note that individual facilities may have provided different installation procedures for use at their own facilities (such as network distribution using the extensions provided by the Windows Installer framework). The instructions below assume direct access to official installation media.

When performing an 'in place upgrade' (installation of a newer version over the top of an existing older installation) the selections on the Custom Setup screen will match the selections from the previous install.

It will be required to reboot the system for complete installation.

Note:

### To install an IADS application:

- 1) Exit all running IADS applications.
- 2) Execute the IADS installation *InstallIADS.exe* via insertion of the CD or by direct execution of the file.
- 3) At the Custom Setup screen select which features to install (some installation packages do not present this screen). The options available are dependent on the installation package. Click the downward triangle next to the hard disk icons to turn on/off individual features. *Make a note of the installed components when requesting a license.*
- 4) Click **Next**.
- 5) Click **Install**.

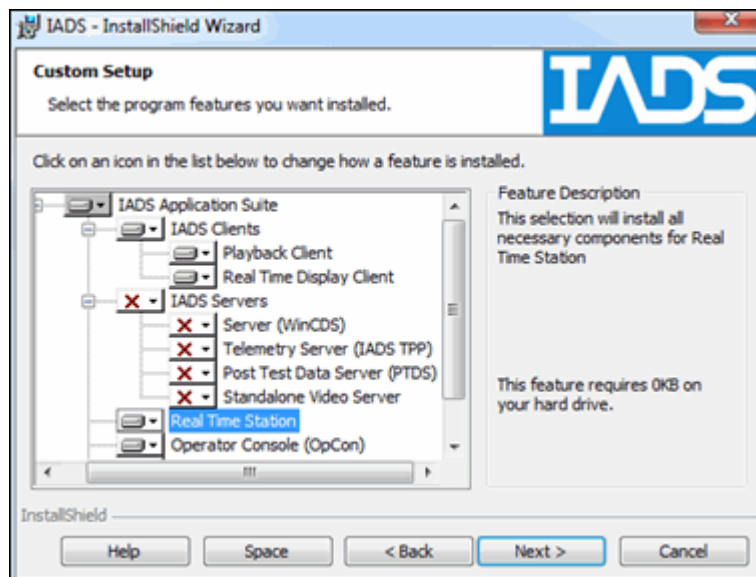


Figure 1-1 IADS Install Wizard Custom Setup

## 1.7. Software Prerequisites

Various software dependencies are not included as part of the IADS installation and require the customer to install them separately. Please use the following table as a reference.

Component	Software Prerequisite	Solution
IADS Client	<ol style="list-style-type: none"> <li>1. Microsoft Windows XP, 2003, Vista, Windows 7; 64 or 32bit</li> <li>2. Microsoft Internet Explorer 6.0 or Greater</li> <li>3. Directx 9.0c or Greater</li> </ol>	<a href="http://www.microsoft.com">http://www.microsoft.com</a>
IADS Server (CDS)	<ol style="list-style-type: none"> <li>1. Microsoft Windows 2000 (Service release 1 or greater), XP, 2003, 2008, Vista, Windows 7; 64 or 32bit.</li> <li>2. Microsoft Internet Explorer 5.5 or Greater</li> </ol>	<a href="http://www.microsoft.com">http://www.microsoft.com</a>
IADS Server (CDS) 64bit	Microsoft Windows 2003 x64, 2008 x64, Vista x64, Windows 7 x64	<a href="http://www.microsoft.com">http://www.microsoft.com</a>
IADS 3D Situational Awareness Display	Terrain Data	Media included with BASE and BASE-TPP products, otherwise sold separately by SYMVIONICS, Inc. <a href="http://iads.symvionics.com">http://iads.symvionics.com</a>
IADS 2D Moving Map Display	Map Files	Media included with BASE and BASE-TPP products, otherwise sold separately by SYMVIONICS, Inc. <a href="http://iads.symvionics.com">http://iads.symvionics.com</a>
IADS 3D Model	3D Model Displays	<a href="http://iads.symvionics.com/programs.html">http://iads.symvionics.com/programs.html</a>
IADS Log Viewer	Microsoft Report Viewer Redistributable 2005	Free Microsoft download. <a href="http://www.microsoft.com/en-us/download/details.aspx?id=21916">http://www.microsoft.com/en-us/download/details.aspx?id=21916</a>
IADS Log Viewer	Microsoft .NET Framework Version 1.1 Redistributable Package	Free Microsoft download. <a href="http://www.microsoft.com/en-us/download/details.aspx?id=26">http://www.microsoft.com/en-us/download/details.aspx?id=26</a>
Lumistar Decom	Ls50P2_Dll.dll	Installed with Lumistar LDPS software. <a href="http://www.lumi-star.com">http://www.lumi-star.com</a>
Acra GTS/DEC Decom	GTSDECW.dll	Installed with GTSSDK software. <a href="http://www.cwc-ae.com/acra-control">http://www.cwc-ae.com/acra-control</a>
L3 S6200 Decom	Data source dll	Requires software from L3.

Acra Compact Flash	KFlashCardXid.dll	Installed with Acra kFlashCardXid software (KSM-500 Suite). <a href="http://www.cwc-ae.com/acra-control">http://www.cwc-ae.com/acra-control</a>
Acra Embedded Video	ffdshow-20041012	Free download. <a href="http://sourceforge.net/projects/ffdshow">http://sourceforge.net/projects/ffdshow</a>
Chapter 10 Embedded Video	ffdshow_rev3054_20090823	Free download. <a href="http://sourceforge.net/projects/ffdshow">http://sourceforge.net/projects/ffdshow</a>

## 2. Licensing IADS

### 2.1. Overview

Customers with Site Licenses agreements have license keys embedded into their installation media and do not need to individually license the IADS Software. When performing an *in place upgrade* (installation of a newer version over the top of an existing older installation) of the software the license information will be maintained from the previous installation.

It is important to note that keys are provided in accordance with purchases made to SYMVIONICS for the use of particular IADS features; access to an installation package does not guarantee the ability to procure a key. Most facilities use a single point of contact for procuring keys. We are happy to interact with multiple points of contact, but it does require additional crosschecking and may increase the time needed to generate Keys.

Keys are issued on a per-machine basis. Keys contain the capability to allow or disallow particular software features. Clicking the *Visualize Key* button in the IADS Key Manager will display the IADS software features that are licensed (available) for this key.

### 2.2. To obtain a node-locked license key

Licensing is performed after a “normal” installation of IADS. Please note the features chosen to install on each system during the installation process ( see Figure 1.1. ).

- 1) Execute the IADS Key Manager located at **Start > All Programs > IADS > IADS Tools > IADS Key Manager**. If there is already a "Currently Registered SysID" skip to Installing a license key.
- 2) Click the **Create SysID** button.
- 3) Click **Yes**.
- 4) Copy and Paste the SysID number into notepad with the following information (please do not send screen shots):
  - a. SysID for each machine requiring a license key
  - b. The name (network name) of the system. This item isn't required but it will aid in tracking and registering the license keys.
  - c. The list of features installed and would like to license, for example, IADS Server, Post Test Data Server, Client, etc; or the part number from the installation media if no Custom Setup screen was available.
- 5) Repeat steps 1-4 on each system requiring a license key.



- 6) Email the text file to [mjones@symvionics.com](mailto:mjones@symvionics.com); the license keys will be emailed back to you. Please include the following information:
  - a. The organization/facility that purchased the license.
  - b. The IADS software Purchase Order number(s).
  - c. A *facility ID* or *key family* if provided. These IDs are in the form *ABI.23C.45*

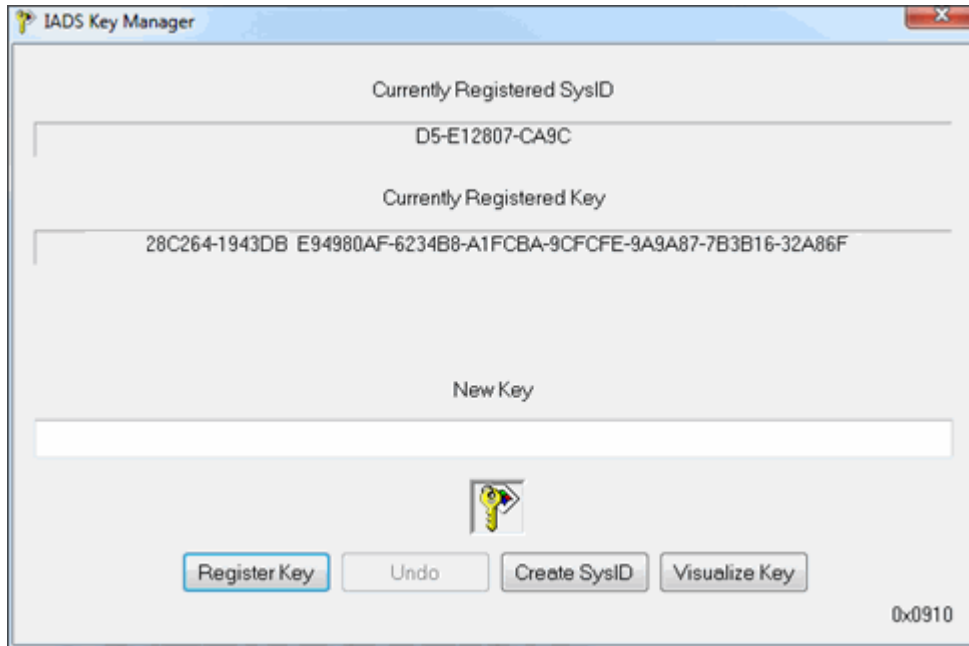


Figure 2-1 IADS Key Manager

### 2.3. To install a node-locked license

- 1) Execute the IADS Key Manager located at **Start > All Programs > IADS > IADS Tools > IADS Key Manager**.
- 2) In the IADS Key Manager dialog, match the number in the Currently Registered System ID field with the same system ID number in the key text file received from SYMVIONICS. Enter the corresponding key into the New Key field (because the key is so long it is recommended to cut and paste it from the text file).
- 3) Click the Register Key button.
  - a. If there are no error messages the licensing is complete.
  - b. Possible error messages are:
    - i. A message appears stating “License Key does not belong to this SysID”. The key may belong to a different machine. Check for a proper key. Repeat steps 2 and 3.
    - ii. A message appears stating, "License Key does not pass checksum". The key was entered incorrectly. Repeat steps 2 and 3.

Note: Keep a copy of the text file on the IADS Server in case of a un-install and then re-install of the same version of IADS, the license keys will need to be reinstalled.

## 2.4. To install a floating license

An IADS Floating License is a license to use an IADS Product on a PC. The license is controlled by the Key Server by allocating or de-allocating it from one system to another. Each time a license key is used, the Key Server takes one seat away from the pool of available licenses. A network connection is necessary for this license type.

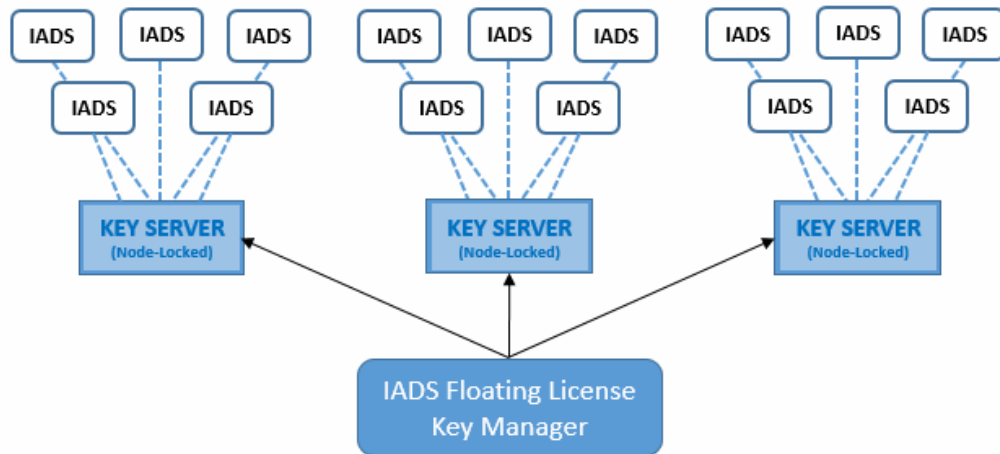


Figure 2-2 IADS Floating License Diagram

- Requires installation and licensing of an IADS node-locked Key Server application to allocate IADS floating licenses.
- The key server manager will automatically “find” key servers on the same network. Note: a mechanism exists to locate key servers that are on a remote networks or system.
- Requires installation of the IADS Floating License Key Server Manager application to manage IADS Key Servers and their associated license keys.

### Step 1 – Register an IADS Key Server license

- 1) Go to **Start > All Programs > IADS > Tools > IADS Floating License Key Server Manager**.
- 2) In the tree on the left, open (click on plus sign) “**key server machine name**” > **Client > Keys**.
- 3) In the “Register a Key” field enter the license key and click **Register**.
- 4) Repeat step 3 for each additional license key. Each key will automatically be associated with an entry in the “Keys” tier

Note: Repeat steps 1-3 for each license type, for example, Client, Real Time Station, etc. The IADS Key Server Manager will only show the tiers for which your system is licensed (typically only clients).

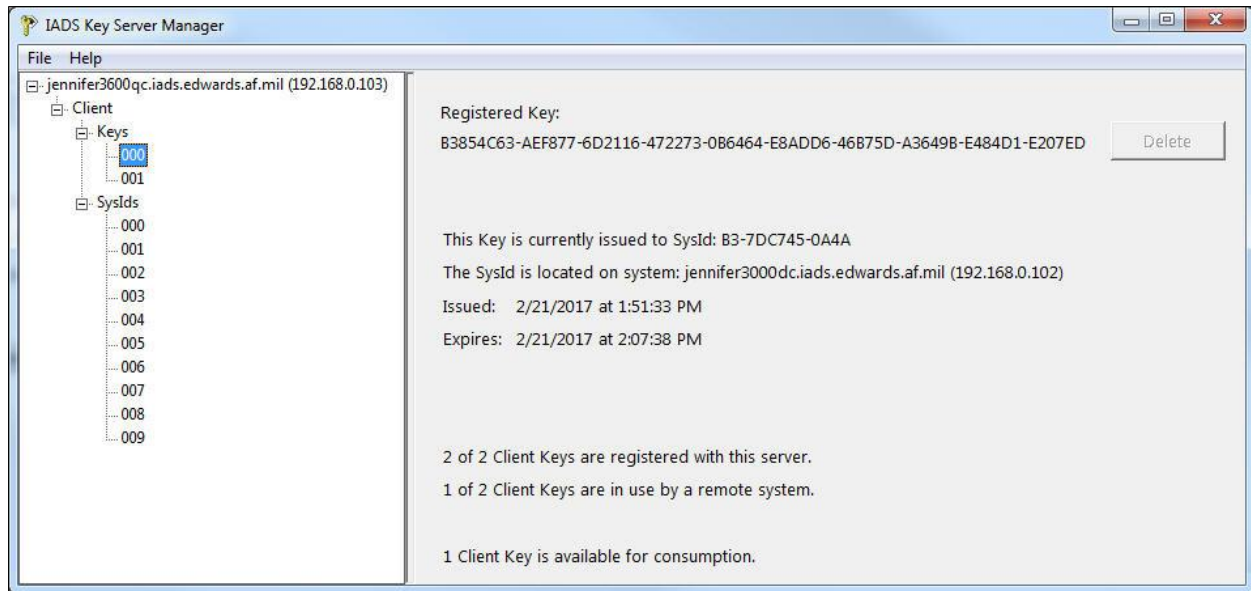


Figure 2-3 IADS Key Server Manager

**Step 2 – Create a SysID on each prospective “floating license” machine and register it with the applicable key server**

- 1) Go to **Start > All Programs > IADS > Tools > IADS Key Manager**.
- 2)
- 3) Click the **Create SysID** button.
- 4) Copy the “Currently Registered SysID” into a text file with the machine name.
- 5) Repeat for each system that will use a floating license.
- 6) Go to **Start > All Programs > IADS > Tools > IADS Floating License Key Server Manager**.
- 7) In the tree on the left, open (click on plus sign) “**key server machine name**” > **Client > SysIDs**.
- 8) In the “Register a SysID” field enter the SysID of the client machine > click **Register**.
- 9) Repeat for each prospective IADS Client.

Note: Repeat steps 1-7 for each license type, for example, Client, Real Time Station, etc. The IADS Key Server Manager will only show the tiers for which your system is licensed (typically only clients).

**Step 3 – Enable systems to access remote (floating) licensing**

- 1) On each IADS Client go to **Start > All Programs > IADS > Tools > IADS Key Manager**.
- 2) Select the “Include Search for Remote License” checkbox.
- 3) Click “**Yes**” in the warning popup. If a license is currently available the dialog will update to show the name of the issuing server.
- 4) Run IADS.

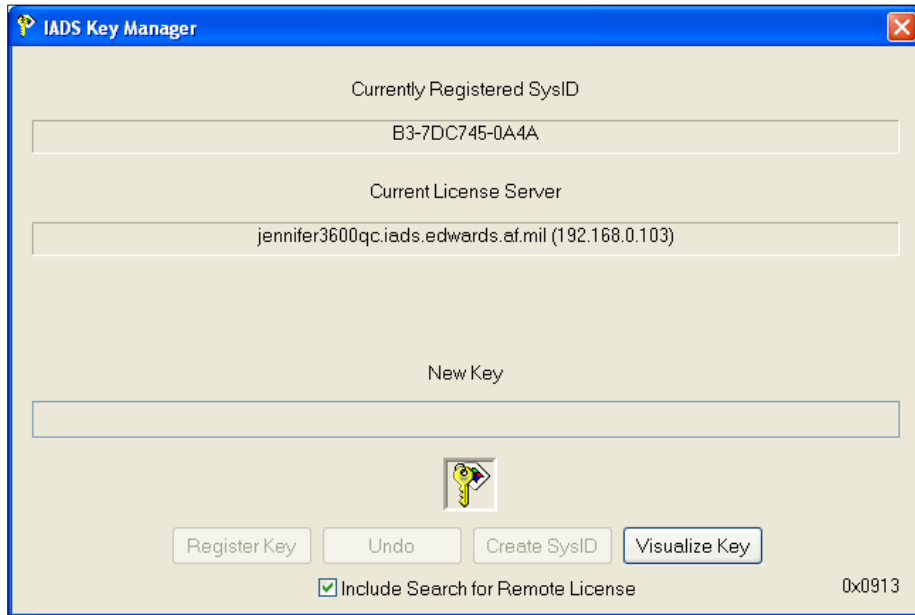


Figure 2-4 IADS Key Manager with Floating License

Note: If your floating license connection is lost during operation, the IADS application will notify the user as shown below. You have three minutes to re-establish the network connection (for example) or the IADS program will exit.

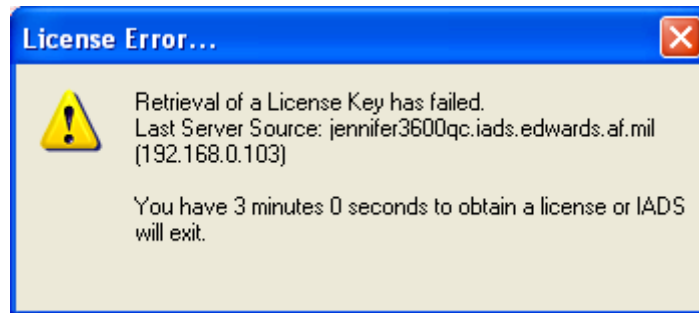


Figure 2-5 Floating License Error

## 2.5. To install a dongle license

An IADS product can be purchased with a pre-licensed Dongle key. A Dongle key is a USB device that must be inserted into the system that runs IADS. After insertion of the Dongle key, no further action is required for licensing IADS.

Note: A Dongle license supersedes any current IADS license on the machine. When the Dongle key is removed, the current IADS license key (if applicable) will be applied.

If the Dongle is removed during operation, the IADS application will notify the user to reinsert the Dongle to continue operation. If the Dongle is not re-inserted promptly, the IADS program will exit.

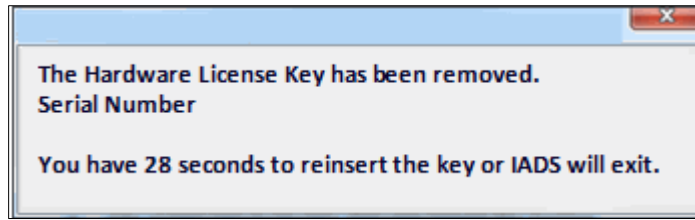


Figure 2-6 IADS Hardware License Missing Dialog

To replace a lost Dongle, the digital serial number must be sent to SYMVIONICS for proper identification. The serial number of a Dongle key is provided with the device at delivery and can also be identified on the IADS Key Manager dialog, bottom right corner. A replacement fee may apply.



Figure 2-7 IADS Key Manager with Dongle

## 2.6. Transferring a license key

As hardware evolves it is becoming very common to transfer a license from old hardware to new hardware. To move an activated license from an existing IADS machine to another, uninstall IADS from the computer with the existing license and collect the file **C:\iadsUninstall.txt**. Submit this file along with a request for a new key ( see section 2.6. ).